

Meetings & Conferences

Meetings at Manchester Art Gallery

Beautiful architecture. Light filled spaces. Home to one of the country's finest collections of art, design and fashion.

Manchester Art Gallery is an inspired choice for conferences, training days, board meetings, and product launches and its location in the heart of the city offers a convenient location for your guests.

With facilities ranging from a purpose-built meeting rooms to on-site catering, and with our team ready to tailor packages to suit your needs, hosting your event at Manchester Art Gallery is hassle free.

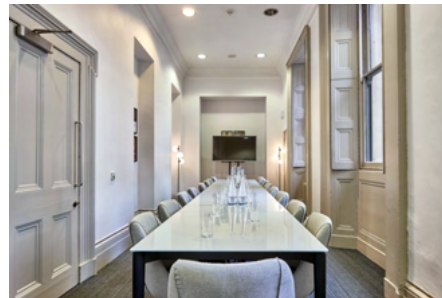
Mary Greg & Charles Rutherston meeting rooms

The Mary Greg and the Charles Rutherston are two smaller meeting spaces situated next to the iconic Victorian Entrance Hall. The original architectural features and large windows create a bright and inspiring setting for board meetings and smaller events. Both rooms are equipped with WiFi connectivity and large plasma screens, allowing for hassle-free presenting.

Full day hire (9am-5pm) - **£395.00**

Half day hire (9am-1pm or 1pm-5pm) - **£315.00**

Hire fee includes 55" plasma screen with HDMI connection



| | |
|-----------|----|
| Boardroom | 18 |
|-----------|----|

Meetings at Manchester Art Gallery

The Lecture Room

The Lecture Room is a bright and adaptable space for product launches, training days, or seminars. As a purpose-built meeting room it comes fully equipped with user-friendly LCD projector and screen, an inbuilt PA system with handheld and lapel microphones as well as blackout blinds and WiFi connectivity.

The adjoining Atrium is the perfect place for refreshments and lunchtime networking

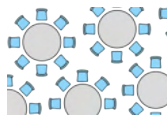
Full day hire (9am-5pm) - **£1,050.00**

Half day hire (9am-1pm or 1pm-5pm) - **£695.00**

Hire fee includes use of the Atrium, LCD projector and screen with HDMI connection, inbuilt PA system with one handheld microphone and two lapel microphones (subject to availability)



| | |
|------------|-----|
| Boardroom | 30 |
| Banqueting | 50 |
| Theatre | 100 |



Meetings at Manchester Art Gallery

Gallery 16

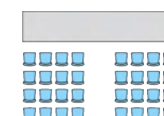
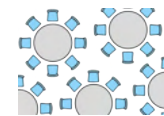
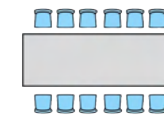
Gallery 16 is home to our collection of artworks by LS Lowry and Valette and is a distinctive venue for larger meetings, presentations, and seminars. The adjacent Gallery 14 (featuring Dutch paintings from 1600-1800) is a beautiful space for refreshments, as well as networking and drinks receptions.

Available for exclusive use during the day, Gallery 16 is a versatile but striking space, showing off the best of Manchester!

Full day hire (9am-5pm) - **£2,500.00**

Out of hours access (5pm-11pm) - **£750.00** (per hour)

Audio-visual equipment available. Quotes provided on request



| | |
|------------|-----|
| Boardroom | 30 |
| Banqueting | 60 |
| Theatre | 120 |

Catering

Our talented catering team have designed a range of exciting and seasonal menus to suit a variety of events. From homemade biscuits and cakes to buffet lunches, all our food is freshly prepared for you and your guests and is complemented by a range of ethically sourced, Fairtrade soft drinks, teas and coffee.

Tea & coffee - £2.95 per person, per serving

Tea, coffee & homemade cake - £6.95 per person, per serving

Breakfast sandwiches from £7.00 per person

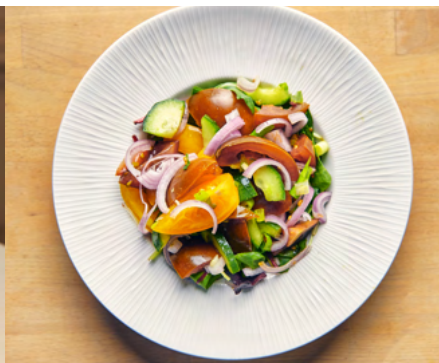
Sandwich lunches from £10.25 per person

Buffet lunches from £17.00 per person

View our sample menu [here](#)

For up to 10 guests, refreshments can also be pre-ordered from the [Gallery Café](#)

All prices exclude VAT and are subject to change



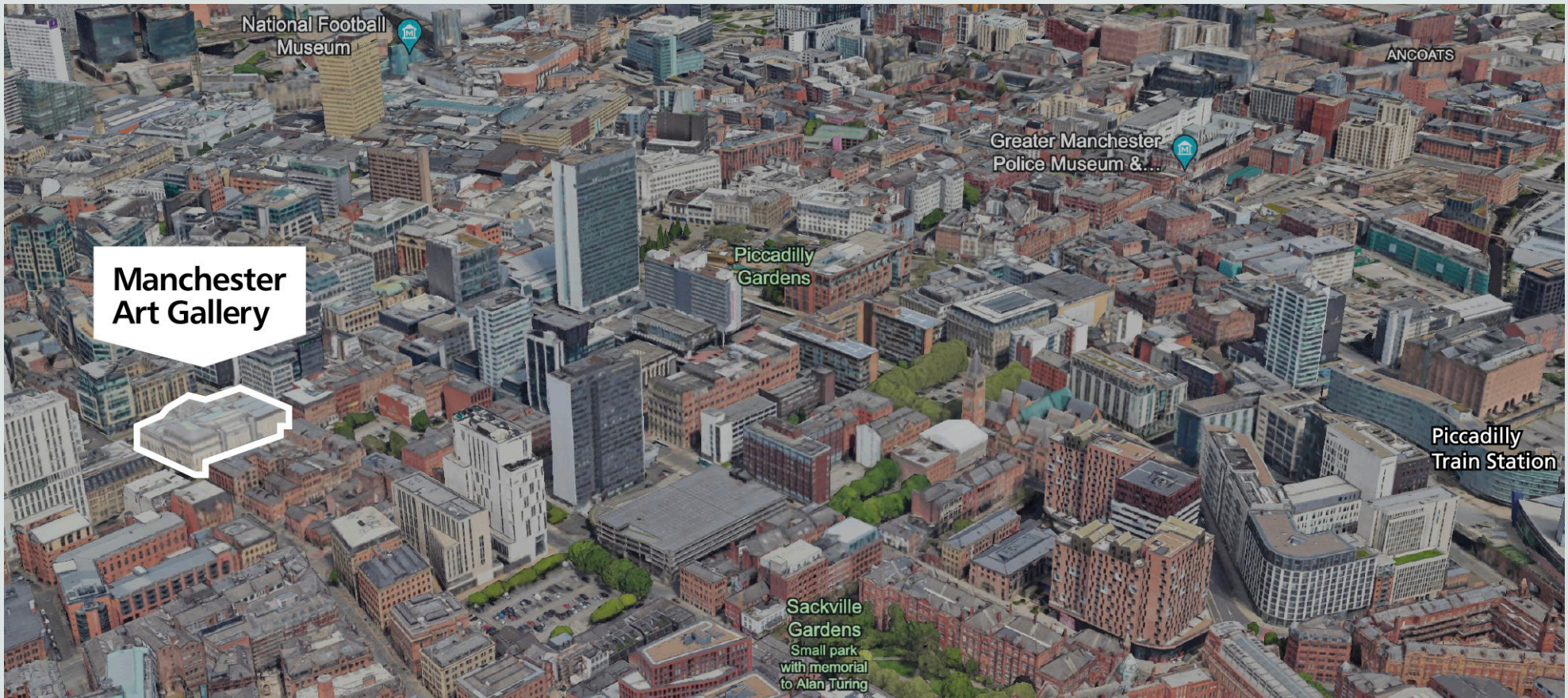
Why choose Manchester Art Gallery?

“Our event went like clockwork. Thank you so much for all your help. The venue was exquisite and much appreciated by our delegates and the access was great for our disabled delegate too. The lunch was lovely, we would certainly consider using Manchester Art Gallery again.”

By making a booking you are supporting the work of Manchester Art Gallery to make great art, exhibitions, learning and thinking happen.

Find out more about our work and how to support us [here](#)





manchesterartgallery.org
 Mosley Street, Manchester, M2 3JL
 0161 235 8862
 eventsteam@manchester.gov.uk

**Manchester
 Art Gallery**



THE
**GALLERY
 CAFÉ**

The gallery's official hotel sponsor

The Alan